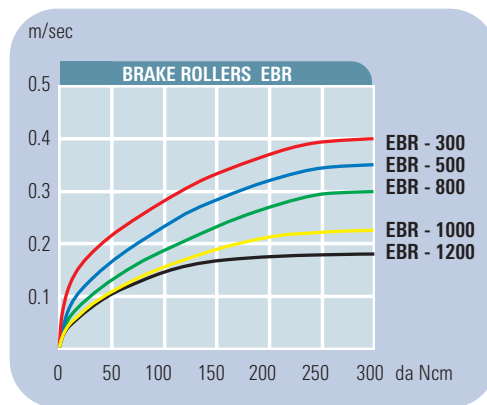
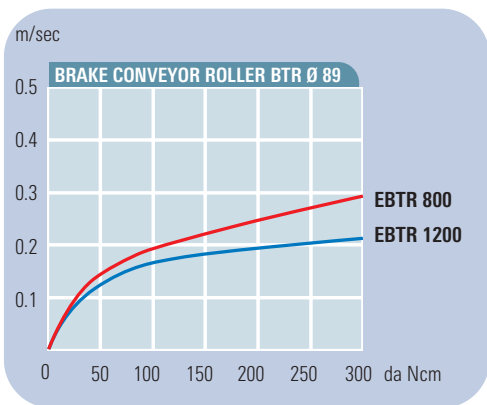
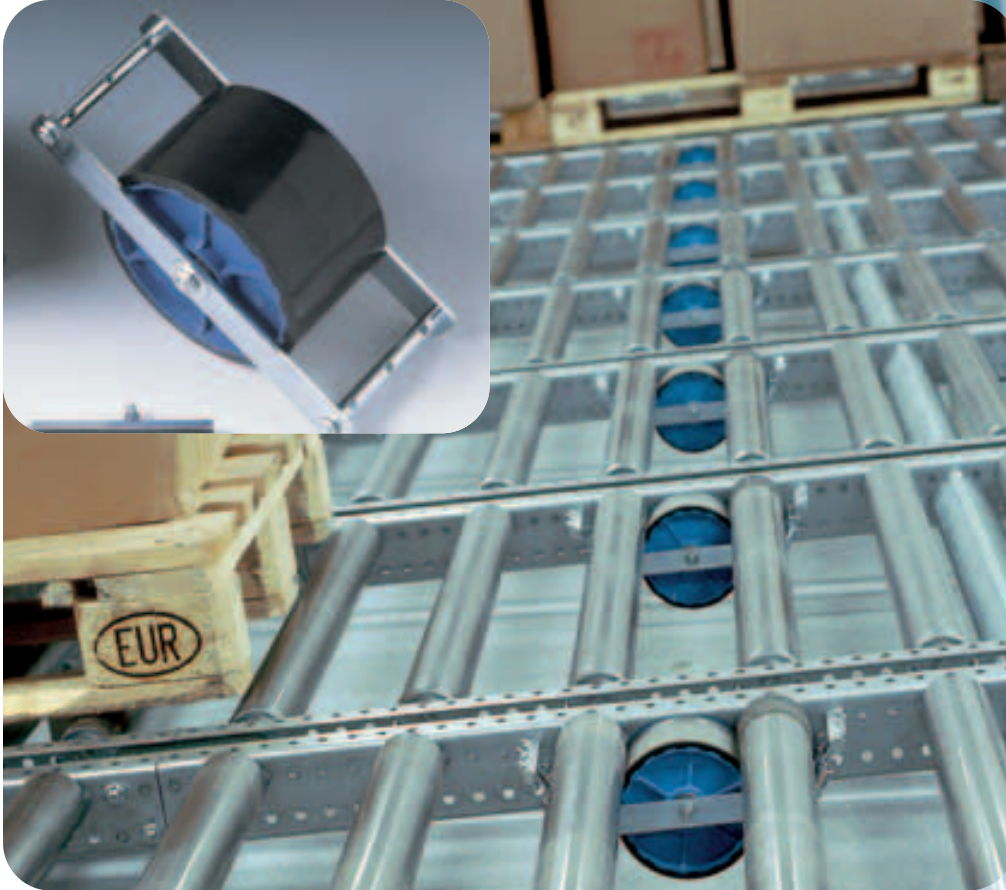


EUROROLL®-BRAKE ROLLERS BRAKE CONVEYOR ROLLERS

Areas of Application



Dependent on the kind of installation EURO-ROLL-Brake Rollers can be supplied with short or long mountings. An extensive range of accessories to install the Brake Rollers and to adjust them exactly supplements the product range.

2 kinds of installation are possible:
Direct or indirect speed control of the pallet to be conveyed.



Rubberised Brake Conveyor Roller

EUROROLL supplies Brake Conveyor Rollers where the entire length of the roller has a shrunk-on rubber cover, which is used for steel pallets or plastic pallets. The result is to get a better friction between the Brake Conveyor Roller and the pallet.

BRAKE ROLLERS BRAKE CONVEYOR ROLLERS

EUROROLL-Brake Rollers and EUROROLL-Brake Conveyor Rollers control the speed of the good to be conveyed on roller tracks while they keep the conveyed good at a constant run-off speed. This is achieved by means of planetary gearing, which at each revolution presses the centrifugal brake discs against the roller body, raising it with proportional brake force up to the brake momentum. The distance of the Brake Rollers and the correct brake roller type are influenced by several factors:

1. Construction and capacity of the roller track
2. Declination of the roller track
3. Characteristics of the good to be conveyed (size, weight, sensitivity, barrel-shaped)
4. Resistance of the Brake Roller
5. Environmental conditions, e.g. wet, cold or warm conditions

At least one Brake Roller or Brake Conveyor Roller has to be fitted per pallet place, as only then a controlled speed without acceleration and the appearance of great force can be achieved. The run-off speed should never be above 0.3 m/sec. The run-off speed is only 0.1 – 0.2 m/sec. when the Brake Rollers are correctly positioned. Important is the correct adjustment of the suspension of the Brake Rollers and Brake Conveyor Rollers. As only by means of the necessary pressing between the Brake Roller and the good to be conveyed (conveyor roller or pallet) a contact free from slipping occurs and a constant conveying speed is achieved.

Braking Force Diagram

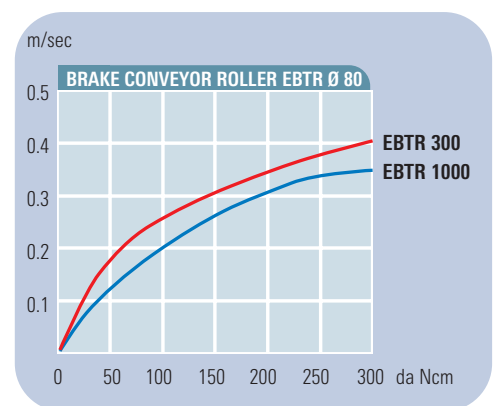
Braking force diagrams are a great help to choose the correct type of Brake Rollers and Brake Conveyor Rollers. Forces (which mainly arise due to acceleration), which exceed the characteristic curve, can overload and destroy the Brake Rollers. Therefore the Brake Rollers and Brake Conveyor Rollers always have to be fitted in pallet distance in roller tracks or even closer to each other. This means that the pallet in each position is always in contact with a Brake Roller (it's a speed controller).



The EUROROLL-Brake Conveyor Rollers are supplied in two different diameters and laid out for different loads:

Brake Conveyor Roller dia. 80 mm
Brake Conveyor Roller dia. 89 mm

Each Brake Conveyor Roller is delivered together with a set of suspension and therefore can only be installed in a way, that the Brake Conveyor Roller is suspended at maximum level of the roller track or less. The correct level of the moving of the elastic



suspension and the lowest level of the top of the Brake Conveyor Roller have to be determined by carrying out careful measurements. (Figure based on experience: approx. 1 – 2 mm above roller upper level).

It is very important, that each Brake Conveyor Roller is exactly adjusted and checked. When using fixed holders the Brake Conveyor Roller will always be adjusted above the upper level of the rollers of the roller track. The level has also got to be determined by carrying out careful tests and then will be exactly adjusted.

TYPES OF INSTALLATIONS

Fixed fitting, with flat spring suspension: **BTR**

Brake Conveyor Roller dia. 89 mm with flat spring suspension:

Load up to 800 kg: **BTR 800**

Brake Conveyor Roller dia. 89 mm with flat spring suspension:

Load up to 1200 kg: **BTR 1200**

Brake Conveyor Roller dia. 89 mm with flat spring suspension:

Load up to 1500 kg: **BTR 1500 D**

(with 2 brake bodies in one brake conveyor roller)

Installation length **EL** (in mm)

Design of the bracing tube:

Tube bright steel: - **B**

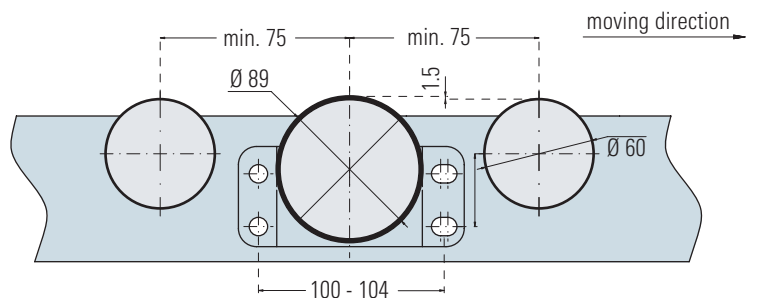
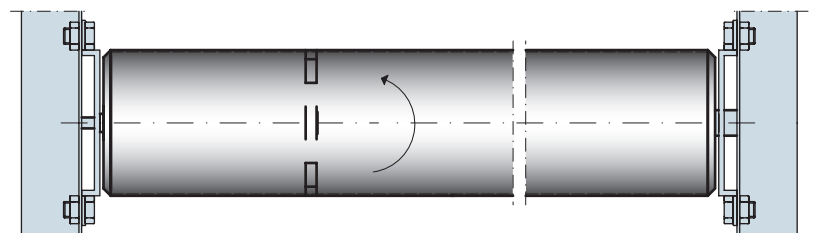
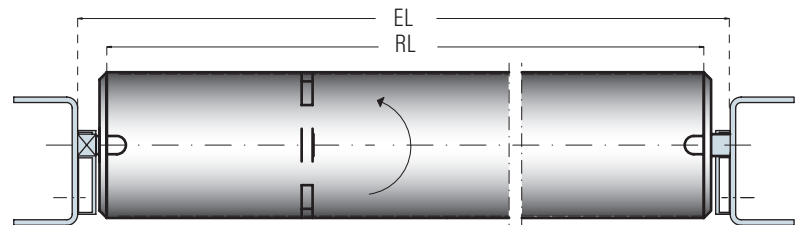
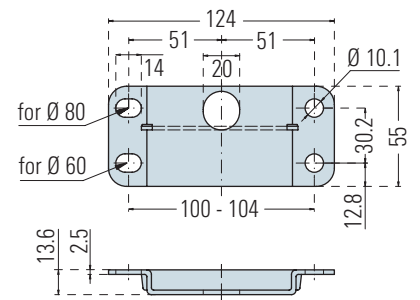
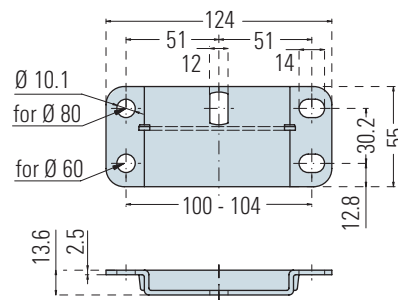
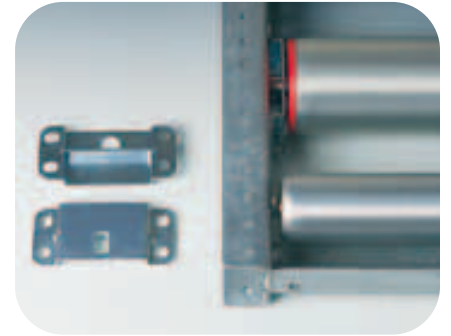
Tube zinc-plated: - **I**

Deep-freeze version: - **TK**

Rubberised coating for steel and plastic pallets: - **G**

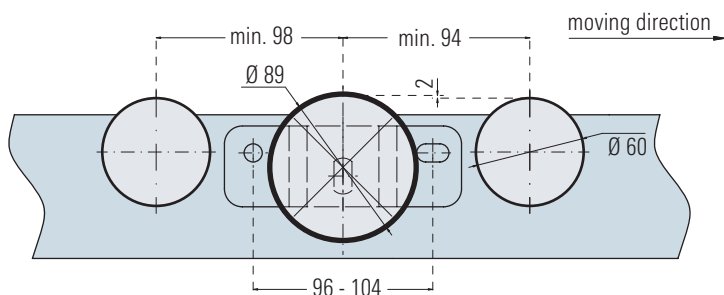
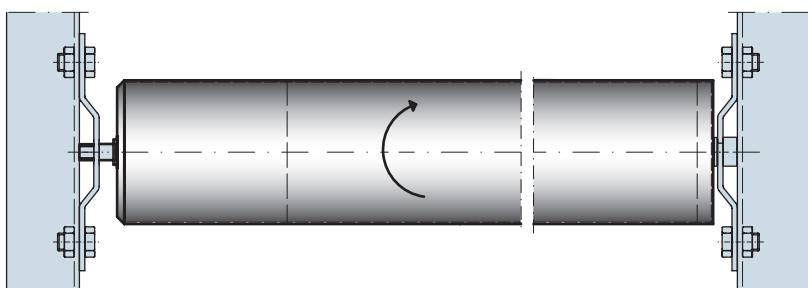
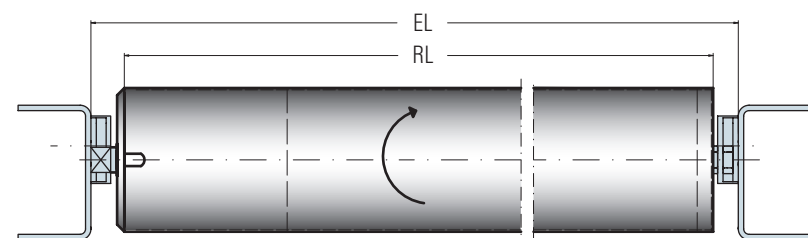
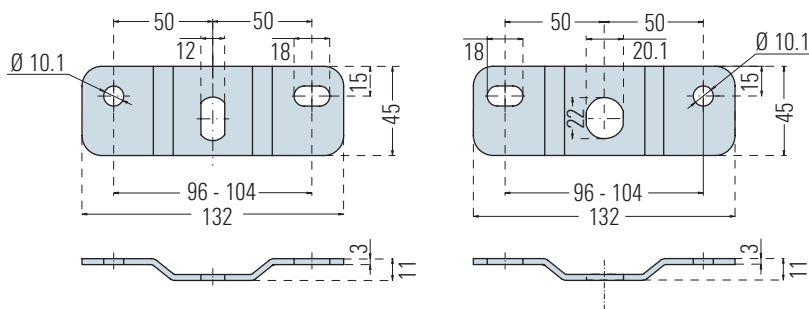
Order example: BTR 800 – 872 – I

Brake Conveyor Roller with flat spring suspension for pallet weight up to 800 daN (kg), for installation length 872 mm, bracing tube zinc-plated.



EUROROLL®-BRAKE CONVEYOR ROLLERS dia. 89 mm

Dimensions, Technical Data



BRAKE CONVEYOR ROLLER dia. 89 mm

Roller Type	Allowed Pallet Weight	Deliverable Suspension Types	LAYOUT			
			Rollers zinc-plated	Rollers blank	Deep-freeze Version	Contact Coating
BT - 800	200 - 1000 kg	EBTS, EBTB, EBTA		B	TK	KB
BT - 1200	600 - 1200 kg	BTS, BTR		B	TK	KB
BT - 1500 D	600 - 1500 kg	BTS, BTR		B	TK	KB



Installation with stiff suspension: **BTS**

Brake Conveyor Roller dia. 89 mm with stiff suspension:

Load up to 1200 kg: **BTS 1200**

Brake Conveyor Roller dia. 89 mm with stiff suspension:

Load up to 1500 kg: **BTS 1500** (with 2 brake bodies in one brake conveyor roller)

Installation length **EL** (in mm)

Design of the bracing tube:

Tube bright steel: - **B**

Tube zinc-plated: - **I**

Deep-freeze version: - **TK**

Rubberised coating for steel and plastic pallet: - **G**

Order example: BTS 800 – 872 – I

Brake Conveyor Roller with stiff suspension for pallet weight up to 1200 daN (kg), for installation length 872 mm, bracing tube zinc-plated.

ACCESSORIES/SPARE PARTS

Brake Conveyor Roller dia. 89 mm, **without** suspension set.

Load up to 800 kg: **BTS 800 – 0**

Brake Conveyor Roller dia. 89 mm, **without** suspension set.

Load up to 1200 kg: **BTS 1200 – 0**

Brake Conveyor Roller dia. 89 mm, **without** suspension set.

Load up to 1500 kg: **BTS 1500 D – 0**

Order example: EBTR 1000 – 0 – 872 – I

Brake Conveyor Roller without suspension for pallet weight up to 1200 daN (kg), for installation length 872 mm, bracing tube zinc-plated.

Flat spring suspension (set):

BTR - BFH 2

Flat spring suspension (set) for D-version

BTR - BFH 3

Fixed suspension (set)

BTS - STH 2

Fixed suspension (set) for D-version

BTSD - STH 3

Rubberised coating for steel and plastic pallets: - **G**